

Al-Cr-Sc (Aluminum-Chromium-Scandium)

V. Raghavan

An isothermal section at 500 °C was determined for this ternary system by [1989Sok]. Recently, Rokhlin et al. [2006Rok, 2007Rok] reported an isothermal section at 640 °C, two vertical sections and a liquidus projection, all for Al-rich compositions.

Binary Systems

The Al-Cr phase diagram by [2000Mah] depicts a number of intermediate phases with significant ranges of homogeneity: CrAl₇ (V₇Al₄₅-type monoclinic), Cr₂Al₁₁ (CrAl₅-type monoclinic), CrAl₄ (CrAl₄-type monoclinic), Cr₂Al (MoSi₂-type tetragonal), and an unconfirmed low-temperature phase X at 75 at.% Cr. Between 30 and 41 at.% Cr, five phases have been reported: αCr₄Al₉, βCr₄Al₉, γCr₄Al₉, αCr₅Al₈ and βCr₅Al₈, with no well-established phase boundaries between them [2000Mah]. The Al-Sc phase diagram [1999Cac] depicts the following intermediate compounds: ScAl₃ (L1₂, AuCu₃-type cubic), ScAl₂ (C15, MgCu₂-type cubic), ScAl (B2, CsCl-type cubic), and Sc₂Al (B8₂, Ni₂In-type hexagonal). There are no intermediate

phases in the Cr-Sc system. (Cr) and (βSc) solidify as a eutectic mixture at 1090 °C [Massalski2].

Ternary Phase Equilibria

[1989Sok] melted about 65 alloys in an arc furnace under Ar atm with the alloy compositions lying mainly in the Al-rich region. The samples were annealed at 500 °C for 720 h and quenched in water. The phase equilibria were studied by metallography, hardness measurements, and x-ray powder diffraction. The isothermal section at 500 °C constructed by [1989Sok] is shown in Fig. 1. No ternary phases were found in the system. The third component solubility in the binary compounds is generally small. The solubility limits were determined by [1989Sok] from breaks in plots of lattice parameter versus composition. Without presenting such a plot, [1989Sok] reported a solubility of 11 at.% Cr in ScAl₃. [2007Rok], however, found this solubility to be about 0.3 at.% Cr. Figure 1 has been modified to reflect this lower value. A number of changes (some of them arbitrary) were found necessary in redrawing Fig. 1, for consistency with

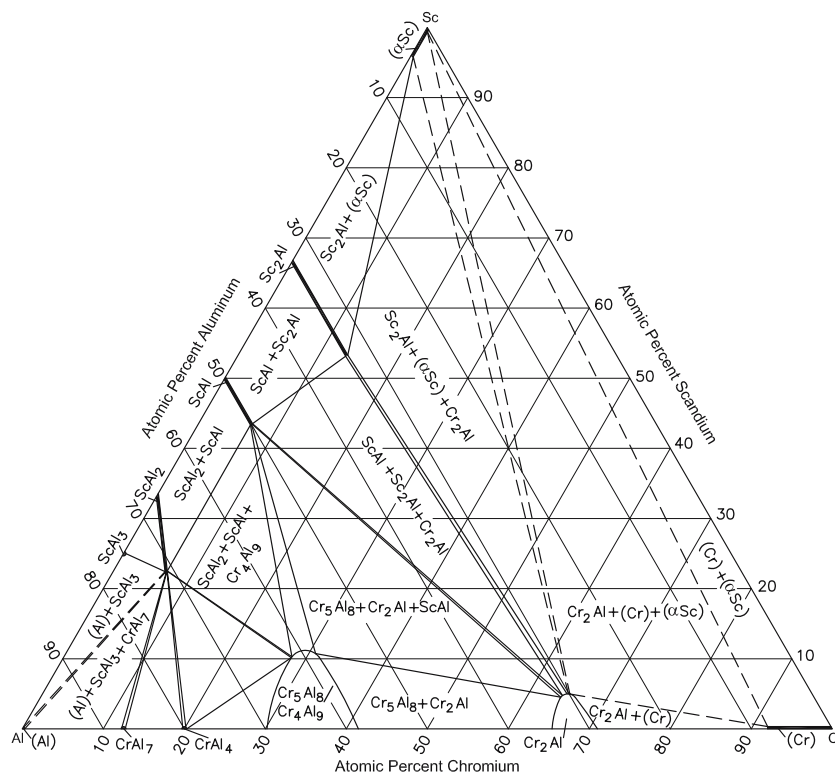


Fig. 1 Al-Cr-Sc isothermal section at 500 °C [1989Sok]

the accepted binary systems. The figure may, therefore, be considered tentative.

With starting metals of 99.99% Al, 99.96% Cr, and 99.86% Sc, [2006Rok] and [2007Rok] prepared master alloys with Sc and Cr contents up to 3.12 and 2.5 mass%, respectively. The master alloys and the final alloys were melted in an arc furnace under Ar atm. The phase equilibria were studied by electrical resistivity measurements, metallography, x-ray diffraction, and electron probe microanalysis. Differential thermal analysis (DTA) was carried out at a heating/cooling rate of 3 °C per min. For isothermal studies,

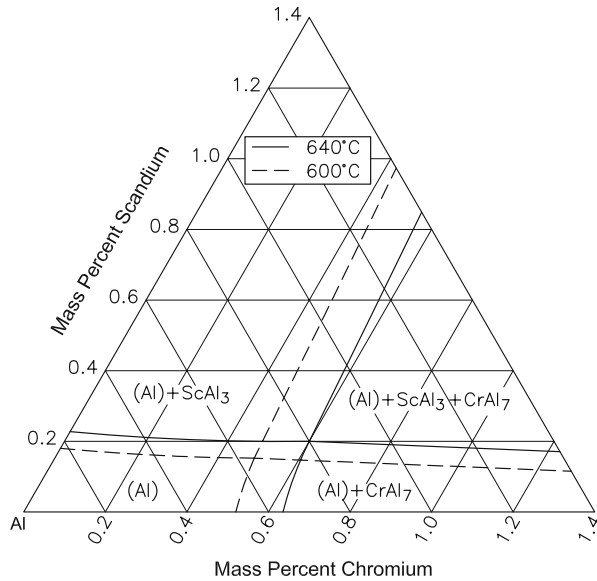


Fig. 2 Al-Cr-Sc partial isothermal sections for Al-rich alloys [2006Rok]

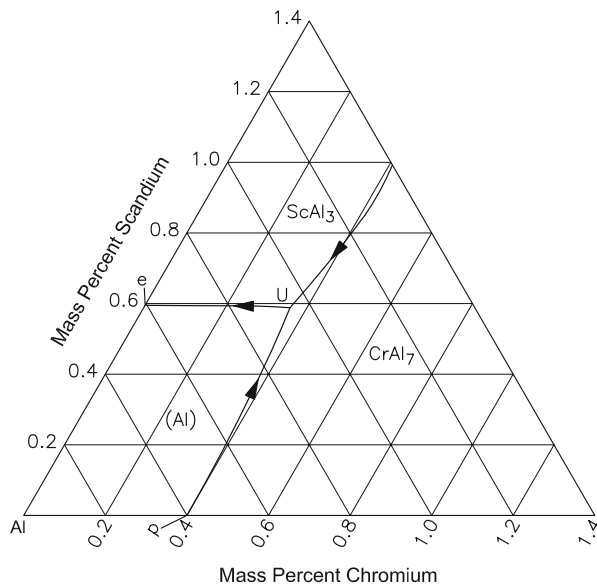


Fig. 3 Al-Cr-Sc partial liquidus projection for Al-rich alloys [2007Rok]

the alloys were annealed at 640 °C for 10 h or at 600 °C for 25 h and quenched in water. The partial isothermal section constructed by [2006Rok] at 640 °C for Al-rich alloys is shown in Fig. 2. The (Al) solid solution in three-phase equilibrium of (Al) + ScAl₃ + CrAl₇ contains 0.23 mass%

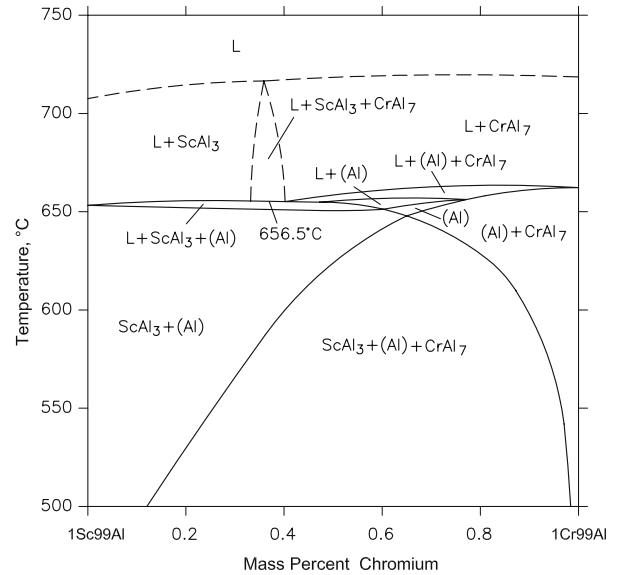


Fig. 4 Al-Cr-Sc vertical section along the 1Sc99Al-1Cr99Al (mass%) join [2007Rok]

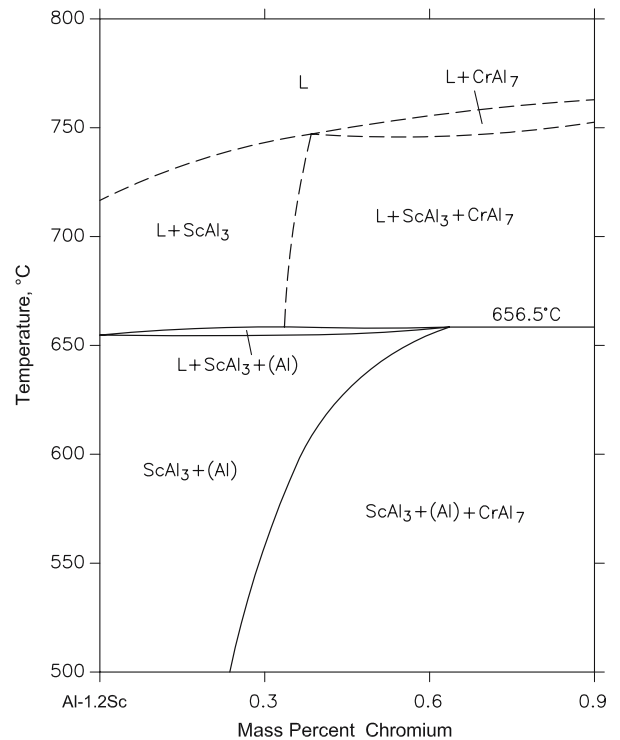


Fig. 5 Al-Cr-Sc vertical section at a constant Sc content of 1.2 mass% [2007Rok]

Section II: Phase Diagram Evaluations

Sc and 0.58 mass% Cr. The isothermal section at 600 °C (not drawn by [2006Rok]) is shown tentatively by dotted lines. The liquidus projection for Al-rich alloys is given in Fig. 3 [2007Rok]. The transition reaction U: $L + CrAl_7 \leftrightarrow (Al) + ScAl_3$ occurs at 656.5 °C. The vertical sections along the 1%Sc99%Al-1%Cr99%Al join and at a constant Sc content of 1.2 mass% are shown in Fig. 4 and 5, respectively [2007Rok].

References

- 1989Sok:** E.M. Sokolovskaya, E.F. Kazakova, and E.I. Poddyakova, Reaction of Aluminum with Cerium and Scandium, *Metalloved. Term. Obrab. Metallov*, 1989, (11), p 29-31 in Russian; TR: *Met. Sci. Heat Treatment Met.*, 1989, (11), p 837-839
- 1999Cac:** G. Cacciamani, P. Riani, A. Saccone, R. Ferro, A. Pisch, and R. Schmid-Fetzer, Thermodynamic Measurements and Assessment of the Al-Sc System, *Intermetallics*, 1999, 7, p 101-108
- 2000Mah:** K. Mahdouk and J.C. Gachon, Thermodynamic Investigation of the Aluminum-Chromium System, *J. Phase Equilibria*, 2000, 21(2), p 157-166
- 2006Rok:** L.L. Rokhlin, T.V. Dobatkina, M.N. Bolotova, and I.G. Korolkova, Phase Compositions of Al-Rich Al-Cr-Sc Alloys at 640 and 600 °C, *Metally*, 2006, (4), p 101-107 in Russian; TR: *Russ. Metall.*, 2006, (4), p 363-367
- 2007Rok:** L.L. Rokhlin, T.V. Dobatkina, and N.R. Bochvar, Phase Equilibria in Al-Rich Al-Sc-Cr Alloys, *Metally*, 2007, (1), p 79-84 in Russian; TR: *Russ. Metall.*, 2007, (1), p 94-100